



CONTENTS

COMPANY OVERVIEW	1 - 2	FINISHING	21 - 22
VALUE CHAIN	5 - 6	QUALITY CHECK & ASSURANCE	23 - 24
GREIGE SOURCING	7 - 8	ETP	25 - 26
GREIGE AND INTERIM INSPECTION	9 - 10	ADMINISTRATION	27 - 28
PROCESSING LAB	11 - 12	CLIENT PROFILE	29- 30
DYEING	13 - 14		
PRINTING	15 - 16		
SCHIFFLI EMBROIDERY	17 - 18		

COMPANY OVERVIEW

We are an illustrious manufacturer and exporter of Rotary Printed Fabrics, Dyed Fabrics, LycraFabrics , Schiffli Embroidery , & Chemical Laces . 21st Century Group is an ISO 9001: 2015 Certified modern textile mill that specializes in woven fabrics for Womens Outer & Inner wear , as well as Men's Bottoms & Shirting fabrics.

With in house Rotary Printing, Fabric Processing & Schiffli embroidery mill , located in Kundli & Barhi, (Sonapat) –the HSIIDC industrial Area of Haryana, 21st century Group produces approximately 40,000 meters of fabric per day for all the major buyers in the global apparel network.

Along with that the Group has an extensive network of sourcing in all major weaving centers of India including Vardhman, VSM, Nahar & Hindoostan etc wherein at least 100 looms are running on a daily basis of 21st Century on subcontract arrangements.

Headquartered in New Delhi, 21st Century Group excels in giving the best customer services to its clients. Our technology is a perfect blend of tradition and modernity. We have commendable infrastructure facilities having the capacity to cater the needs of our international buyers according to their demands.

OUR VISION & MISSION

- To exceed customer expectations in providing the best job processing in bleaching, dyeing and printing.
- To support environmentally and socially responsible business practices
- To build customer loyalty

“Anything is possible. It’s all in the mind”

VALUES

- **INTEGRITY-** Our word is our commitment
- **LOYALTY-** our customers and community come first
- **RESPONSIBILITY-** Conducting business in a socially and environmentally sustainable manner.

21ST CENTURY

C O M M I T T E D

E f f i c i e n t &

Noble

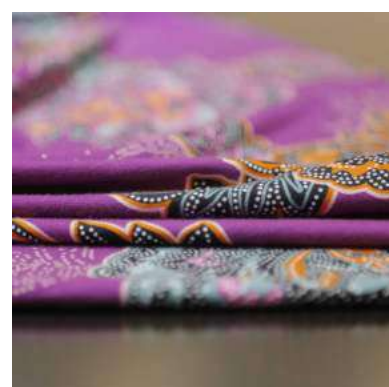
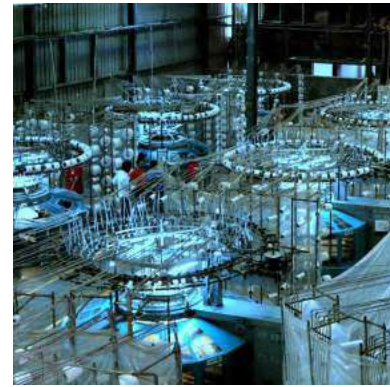
ORGANISATION

To produce

Unmatched

Refined

Y I E L D



VALUE



CHAIN





The Group has an extensive network of sourcing in all major weaving centers of India including Vardhman, VSM, Nahar & Hindoostan etc wherein large no of looms are running on a daily basis of 21st Century on subcontract arrangements.



GREIGE SOURCING



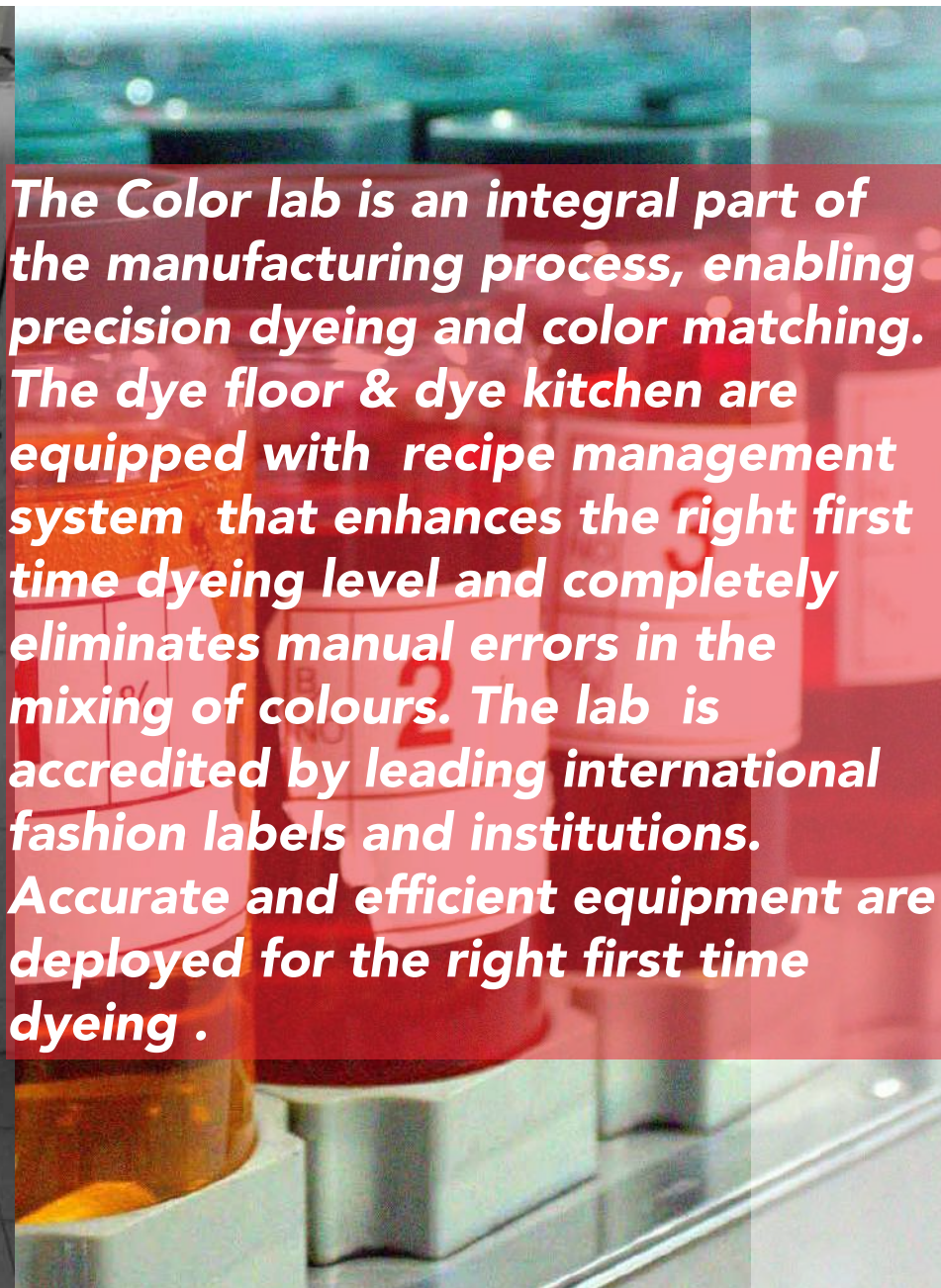
The Greige store acts as a warehouse for interim inspection. All the lots are issued for dyeing ,printing & embroidery after proper inspection of quality & quantity. Distribution of the Greige fabric for further processing takes place .



GREIGE & INTERIM INSPECTION



The Color lab is an integral part of the manufacturing process, enabling precision dyeing and color matching. The dye floor & dye kitchen are equipped with recipe management system that enhances the right first time dyeing level and completely eliminates manual errors in the mixing of colours. The lab is accredited by leading international fashion labels and institutions. Accurate and efficient equipment are deployed for the right first time dyeing .



**PROCESSING
LAB**

DYEING

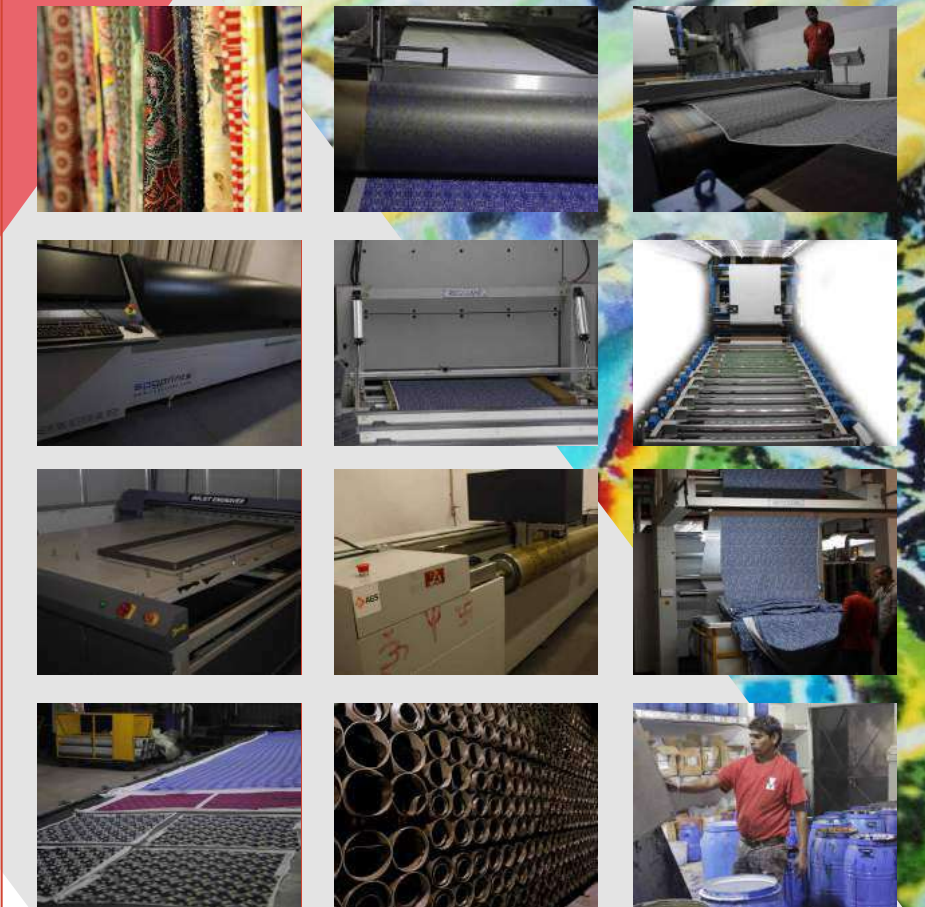
21st Century Dyeing setup is equipped with

- **Singeing Machine**
- **Continous Chainless Mercerizer.**
- **Hydraulic Maxi Jiggers.**
- **HTHP Soft Flows.**
- **Jet Dyeing Machine;** capable of handling various volumes of dyeing. The machines are equipped with system which provides complete control over the various parameters of dyeing. The Dyeing machines are supported by colour and chemical dispensing system

PRINTING

Printing is one of the most important value adding service provided by 21st Century .
Rotary Printing setup is equipped with following machines
STORMAC RD VI GOLD- ROTARY PRINTING (Austria).
Micro Inkjet Rotary Engraver.
Texfab Universal Loop Ager.
Text fab Continuous Washing Range .

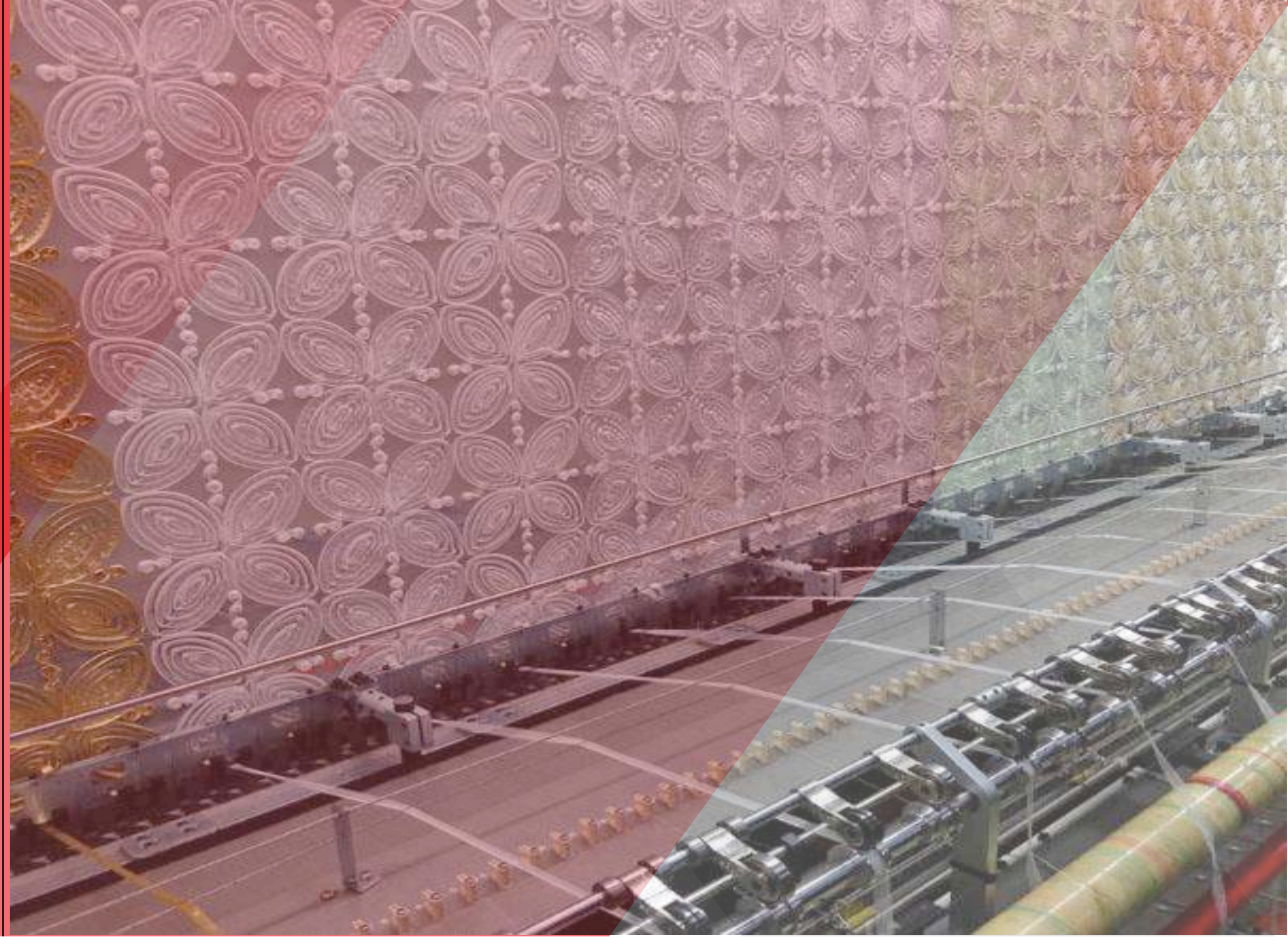
21st Century Is capable of producing an enormous quantity of up to 25000 mtrs of printed fabric a day



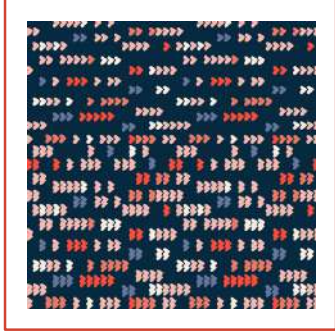
SCHIFFLI EMBROIDERY

21st Century is one of the leading companies in Schiffli embroidery. Catering to the needs of garment and fabric exporters for more than 20 years, it has one of the largest units in Northern India..The two manufacturing facilities are equipped with the finest SWISS embroidery machinery from LASSER & SAURER,.

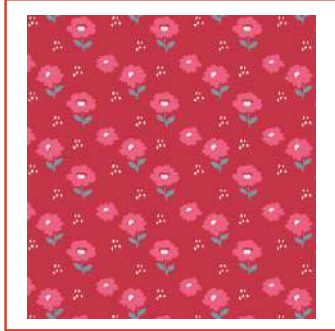
Designs are developed in-house on an embroidery software and are loaded onto our computerized Swiss machines, to provide the finest quality in embroidery. The company constantly upgrades its technology and offers added facility of in-house fabric processing. 21st Century has established itself as a pioneer in schiffli embroidery, and has been manufacturing for a number of esteemed retailers worldwide.



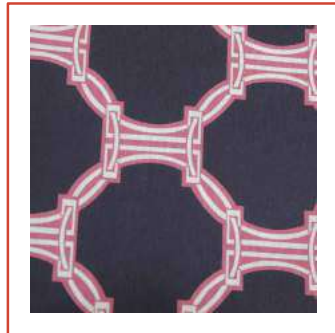
DISCHARGE



REACTIVE/PROCION



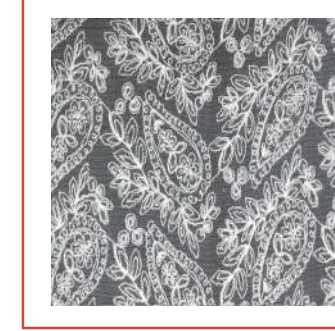
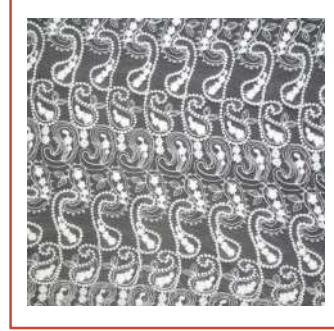
PIGMENT



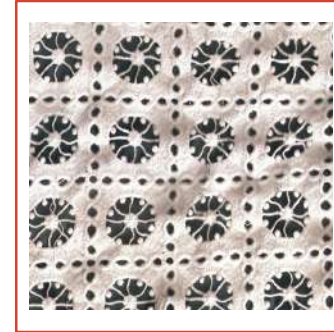
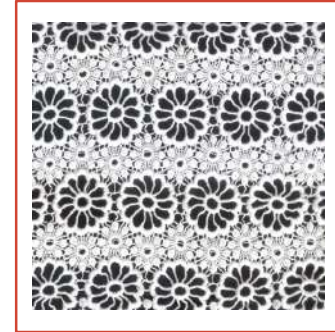
CHEMICAL LACES



SCHIFFLI EMBROIDERY



GPO LACES



TYPES OF PRINTS & SCHIFFLI EMBROIDERY



FINISHING

Finishing of fabrics can be performed after dyeing, printing or at the greige stage (heatset) respectively. 21st Century deploys following machinery

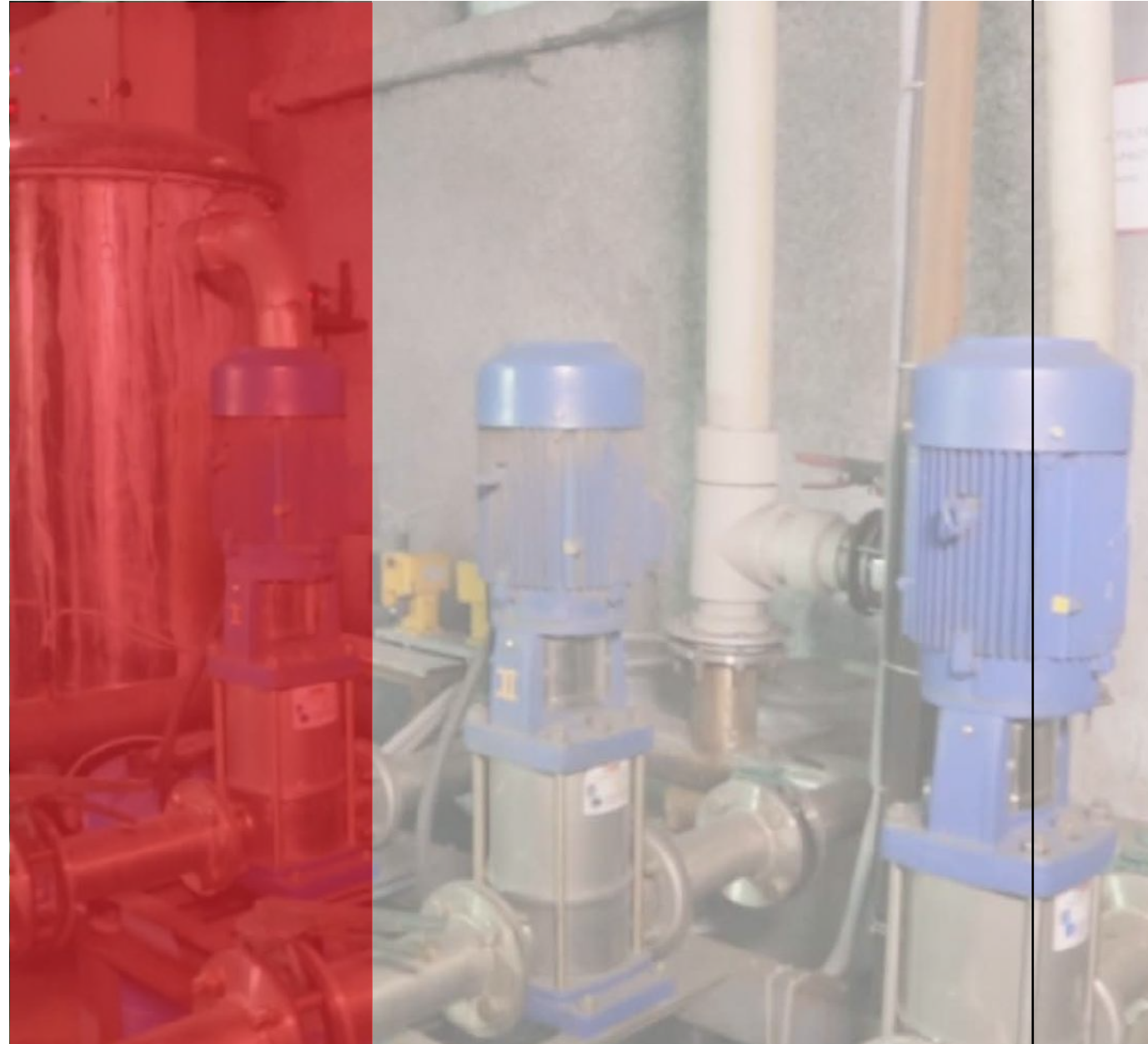
- **Hot Air Stenter Machine**
- **Compressive Shrinkage Range –ZERO ZERO MACHINE.**
- **Peach Machine.**
- **Calender Machine.**
- **Deccatising Machine**

The QC&A is an integral part of 21st Century which assures a thorough inspection of the produce before dispatching. Levels of surveillance are ensured throughout by interim inspections, while complying with international protocols. 21st Century ensures a zero defect product through the strict protocols

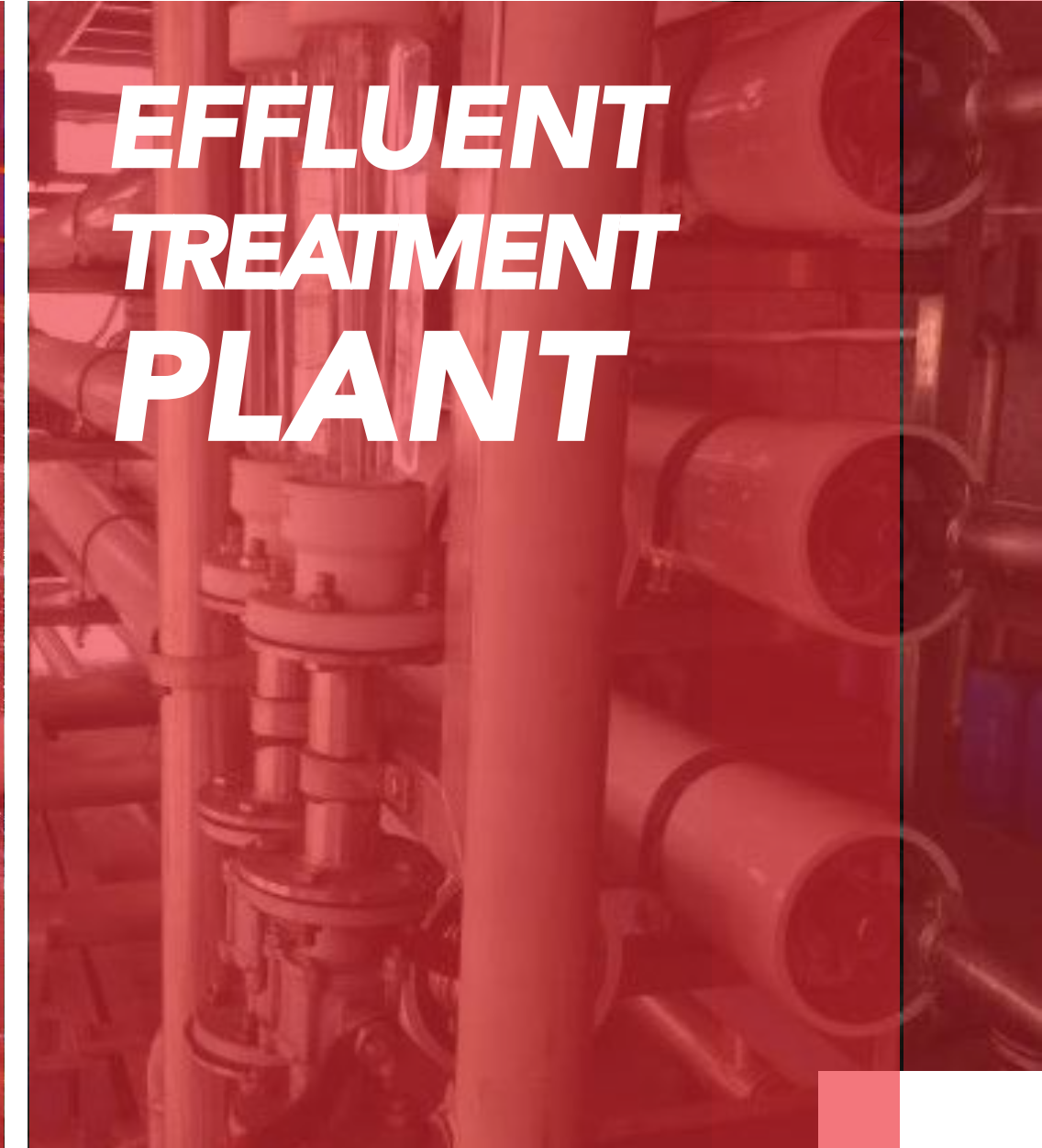


QUALITY CHECK AND ASSURANCE

21st Century takes complete care in the treatment of wastages and recycling of natural resources with Biological Treatments, Waste Water management, Water recycling and water treatment by Reverse Osmosis. We are located Barhi Textile Park having CETP for all the units ensuring accurate treatment of polluted water before disposal. In spite of CETP , we have installed ETP in the unit eliminating chances of any negligence. Waste Disposal through GEPIL .



***EFFLUENT
TREATMENT
PLANT***



ADMINISTRATION



The Human Resource teams look after maintaining the protocols for the disciplined functioning of the organization. They look after induction of fresh graduates at regular intervals to strengthen the organization while also taking care of the government documentation and policies.



The engineering team caters to the responsibility of handling the current production systems effectively with the manufacturing department and to innovate and develop new leaner and more cost-effective solutions for sustained, environment-friendly and efficient solutions. The Engineering team looks after the preventive maintenance and repair of the machines during breakdowns in synergy with Machine Manufacturers.



A dedicated marketing team handles marketing and sales for the organization. The entire process of getting orders to the completion and delivery is handled by the sales and marketing team.

We work with leading manufacturers who work for below brands



ANN TAYLOR



M&S

fcuk®

Monsoon

PERRY ELLIS

BANANA REPUBLIC
BR



Sainsbury's



ZARA

KOHL'S

JCPenney
Every Day Matters



MISS SIXTY

ESPRIT

★macy's



CLIENT PROFILE

*and many
more...*

CONTACT US

Processing Mill:
207, Barhi Industrial Area, Phase-1, HSIIDC,
Haryana.

Embroidery Unit 1:
Plot No:426, EPIP Kundli Ind.Area, HSIIDC,
HARYANA

Embroidery Unit 2:
55, Barhi Industrial Area, Phase-1, HSIIDC,
Haryana.

Head Office:
B-199, Ashok Vihar Phase-1 ,New Delhi-110052

EMAIL: varun@21centurytextile.com;
tarun@21centurytextile.com;
nakul@21centurytextile.com

PHONE NUMBER: 9818795979;9811112919
WEBSITE: www.21centurytextile.com